

# Tech Specs

**Processor**

Intel® Core™ Ultra 9 185H (16 cores, up to 5.1 GHz)

**Operating System**

Windows 11 Pro, English, Dutch, French, German, Italian

**Graphics Card**

NVIDIA® GeForce RTX™ 4070, 8 GB GDDR6, 60 W

**Display**

16.3", Touch, UHD+ 3840x2400, 60Hz, OLED, Anti-Reflect, Anti-Smudge, 400 nit, InfinityEdge

**Memory**

64GB, LPDDR5X, 7467MT/s

**Storage**

2TB M.2 PCIe NVMe Solid State Drive

**Colour**

Graphite

**Microsoft Office**

Activate Your Microsoft 365 For A 30 Day Trial

**Security Software**

McAfee Business Protection 1-year

**Support Services**

1Y ProSupport Next Business Day Onsite Service after remote diagnosis with HW-SW Support

**Accidental Damage Protection**

None

**Keyboard**

US-Int Backlit Keyboard.

**Ports**

1 headphone/microphone combo jack (3.5mm), featuring Waves Nx® 3D audio with head tracking

For computers shipped with integrated Intel® Arc Graphics, NVIDIA® GeForce® RTX™ 4050 GPU, or NVIDIA® GeForce® RTX™ 4060 GPU:  
3 Thunderbolt™ 4 Gen 2 Type-C® ports with DisplayPort Alt Mode/USB4 and PowerDelivery

For computers shipped with NVIDIA® GeForce® RTX™ 4070 GPUs:  
2 Thunderbolt™ 4 Gen 2 Type-C® ports with DisplayPort Alt Mode/USB4 and PowerDelivery  
1 USB 3.2 Gen 2 Type-C™ port with Power Delivery and DisplayPort™

**Slots**

1 microSDXC v6.0 UHS-I/UHS-II card reader

**Dimensions & Weight**

Height: 18.7 mm (0.74 in.)  
Width: 358.18 mm (14.10 in.)  
Depth: 240.05 mm (9.50 in.)  
Starting weight: 2.13 kg (4.7 lbs. ) for FHD+ display and UMA  
Starting weight: 2.20 kg (4.8 lbs.) for OLED display

**Touchpad**

Multi-touch gesture-enabled precision touchpad with haptic function, Seamless glass touchpad with haptics

**Camera**

1080p at 30 fps FHD camera  
360p at 15 fps IR camera  
Dual-microphone array optimised with Waves MaxxVoice® supporting VoIP

**Audio and Speakers**

Quad-speaker design with 3 W main x 2 channels + 2 W Tweeter x 2 channels = 10 W total  
Studio quality tuning with Waves MaxxAudio® Pro and Waves Nx® 3D audio.

**Chassis**

CNC machined aluminium with Corning® Gorilla® Glass 3 palm rest in graphite or platinum  
Corning® Gorilla® Glass Victus® on OLED cover glass  
Corning® Gorilla® Glass 3 capacitive function row

**Wireless**

Intel® Killer™ Wi-Fi 7 1750 (BE200) 2x2 + Bluetooth 5.4 Wireless Card

**Primary Battery**

6-Cell, 99.5Whr

**Power**

130W Type-C Adapter

**Regulatory**

[Product Safety and Environmental Datasheets](#)  
[Dell Regulatory Compliance Home Page](#)  
[Dell and the Environment](#)

How easy is it to compare and select options for this product?

Very Difficult

Very Easy

# Supercharged Performance. AI ready.

Bring your most intensive projects to life with our most powerful XPS laptop<sup>[\[1\]](#)</sup>, enabled by Intel<sup>®</sup> Core<sup>™</sup> Ultra processors with built-in AI, all wrapped in an iconic design.

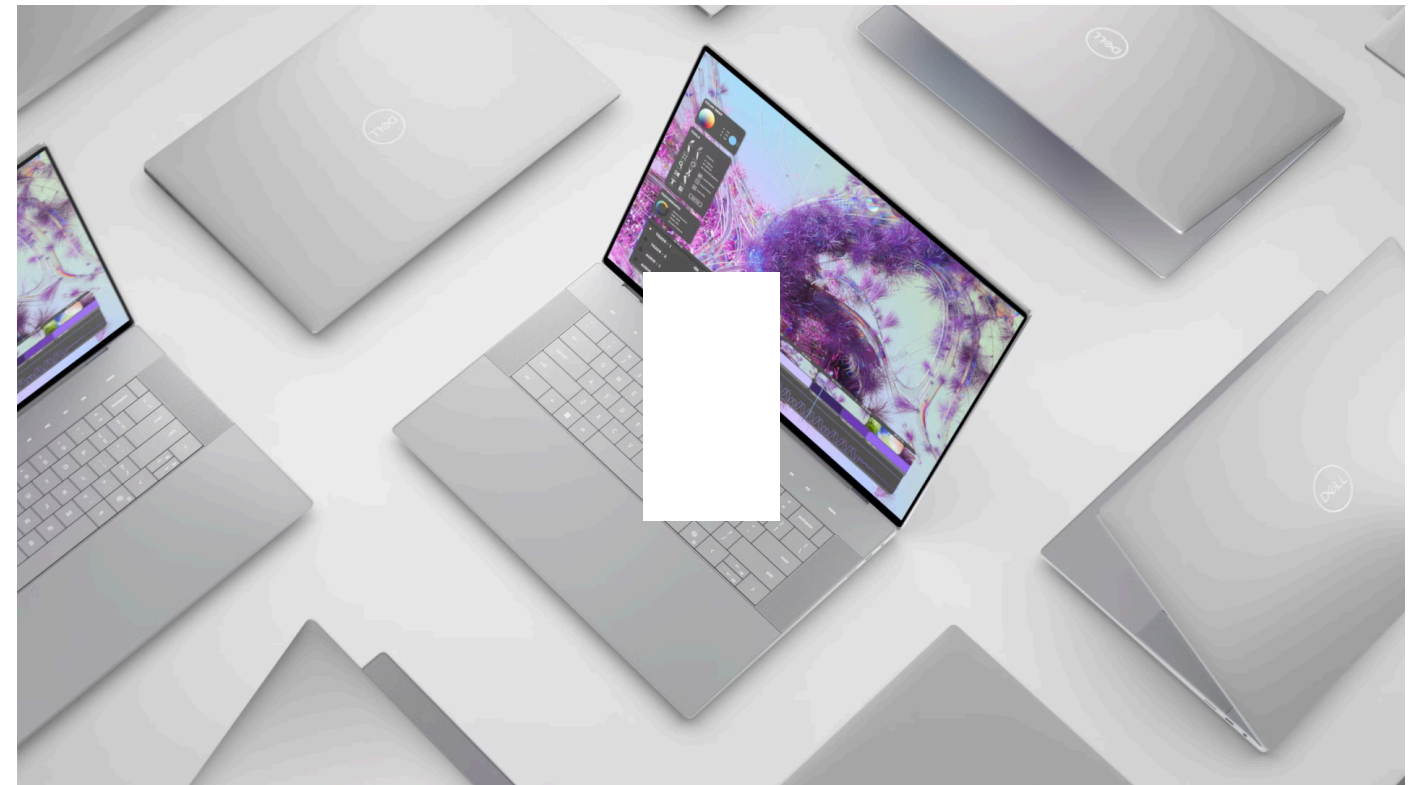
## XPS 16: Powerful from every angle

Watch the  
video



# Iconic design

Crafted with machined (CNC) aluminium and Gorilla® Glass 3 to deliver a strong, lightweight laptop. The XPS 16 is available in Platinum or Graphite with tone-on-tone finishes for an elegant, minimalistic design.

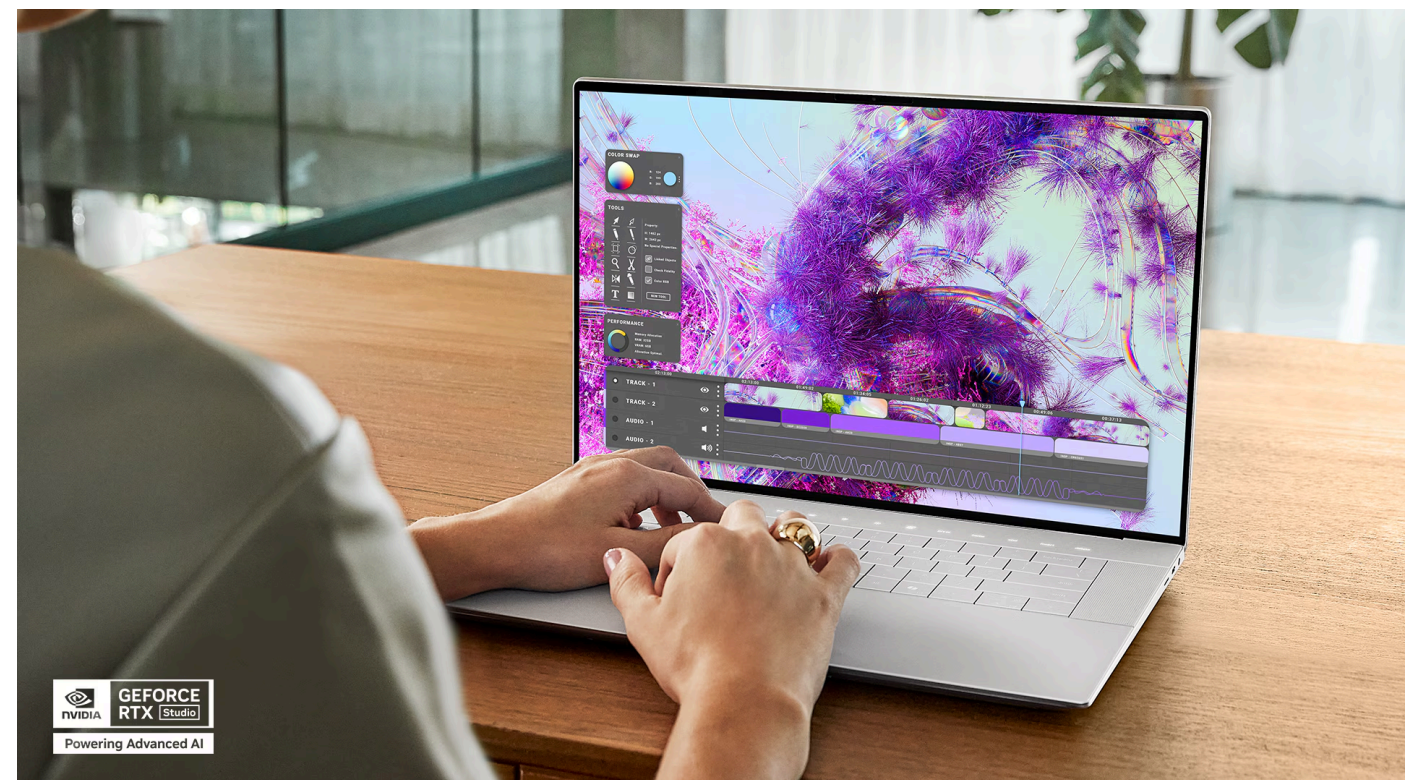


# Powerful creativity

Run demanding apps smoother and faster with powerful Intel® Core™ Ultra 7 processors, and up to 80W of sustained performance. Performance class Intel® Core™ Ultra processors deliver a dedicated engine to help unlock AI possibilities on the PC.

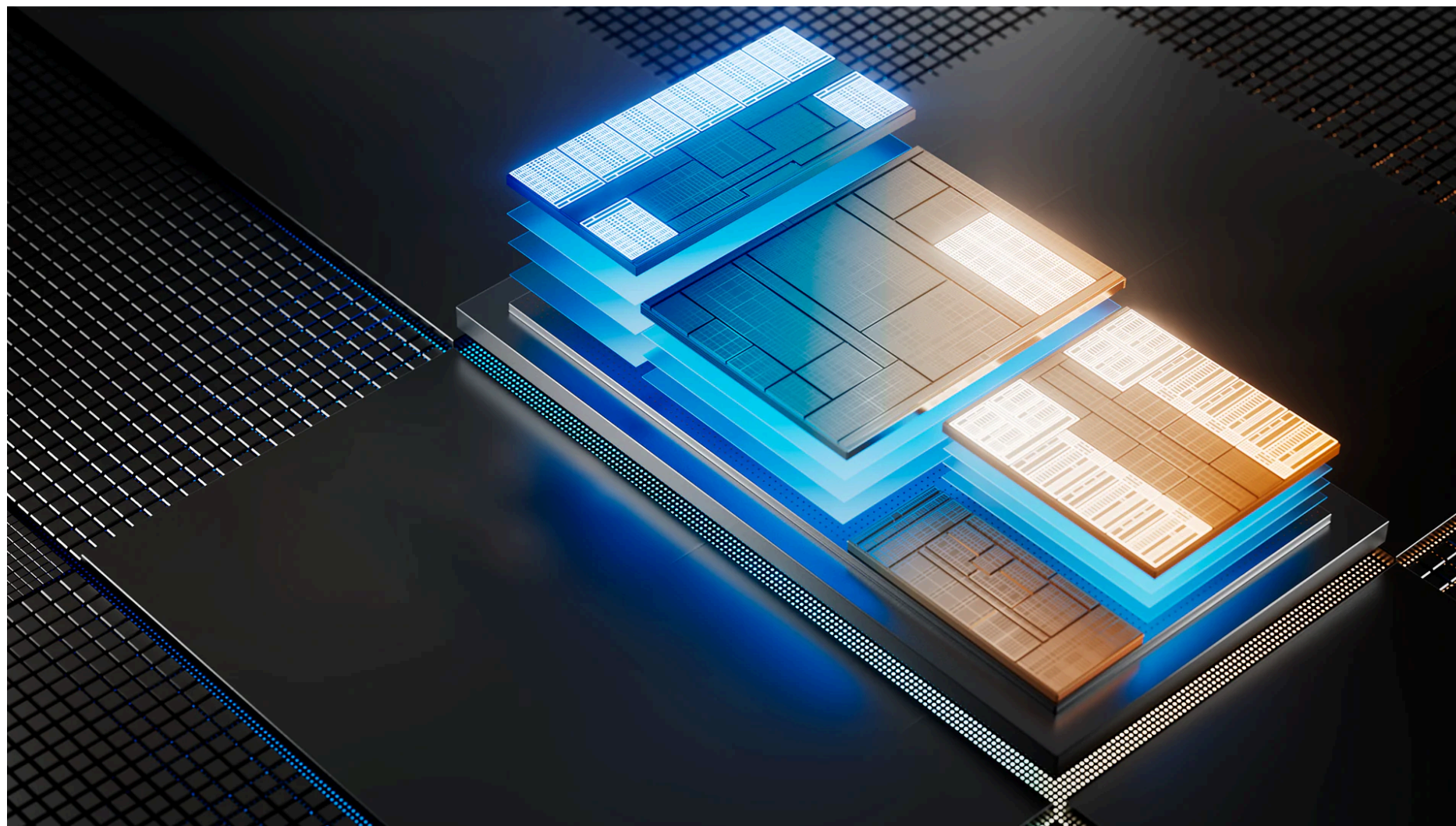
NVIDIA Studio drivers allow you to swiftly edit, export videos and power AI-enabled creative apps for 3D, video or graphic design with NVIDIA® 40-series graphics up to GeForce RTX™ 4070 Laptop GPU (60W).

Multi-task with less lag and access files easily, with up to





4TB of storage<sup>[2]</sup> and 55% faster LPDDR5x memory<sup>[3]</sup>. Get up to 28 hours with a FHD+ display when streaming your favorite shows using the Netflix Windows 11 app, up to 12 hours of streaming with an 4K+ OLED display.



### GPU

High Throughput: Ideal for AI-accelerated digital content creation and video editing with creation apps like Adobe.

### NPU

Low Power: Ideal for running AI features like Microsoft Studio Effects during video calls.

### CPU

Fast Response: Ideal for real time multi-tasking and AI workload such as noise cancellation and instant transcription.



# Faster performance, longer battery life<sup>[4][5]</sup>

2x

Faster Performance<sup>[6]</sup>

2x

Longer Battery life<sup>[7]</sup>

2.3x

Faster AI video editing  
performance<sup>[8]</sup>

Get up to 28 hours<sup>[9]</sup> with a FHD+ display when streaming your favorite shows using the Netflix Windows 11 app, and up to 13 hours of streaming with a QHD+ OLED display<sup>[10]</sup>.

## Personalise your PC experience

# Immersive visuals

Watch content come alive with sharp detail and true-to-life colour, and rich, cinematic sound.

Crisp visuals and true-to-life colour with 16.3-inch touch-capable InfinityEdge display with up to 4K+ resolution

Moving content is smoother with up to 120Hz variable refresh rate, which also improves battery life when viewing static images or web pages



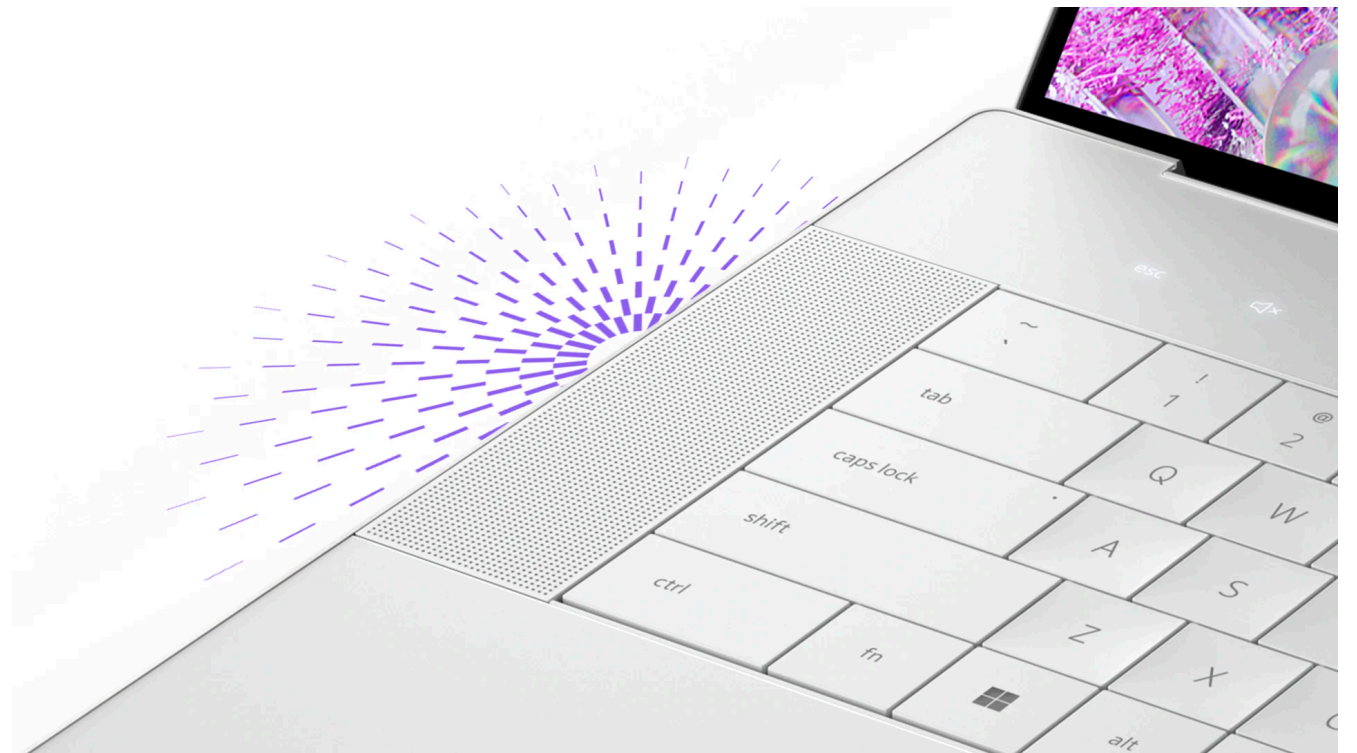
Enjoy ultra vivid colour, sharp contrast and rich details with Dolby Vision and vibrant colours against a true black background with an optional OLED display

Eyesafe® technology reduces blue light without comprising colour



# Cinematic audio

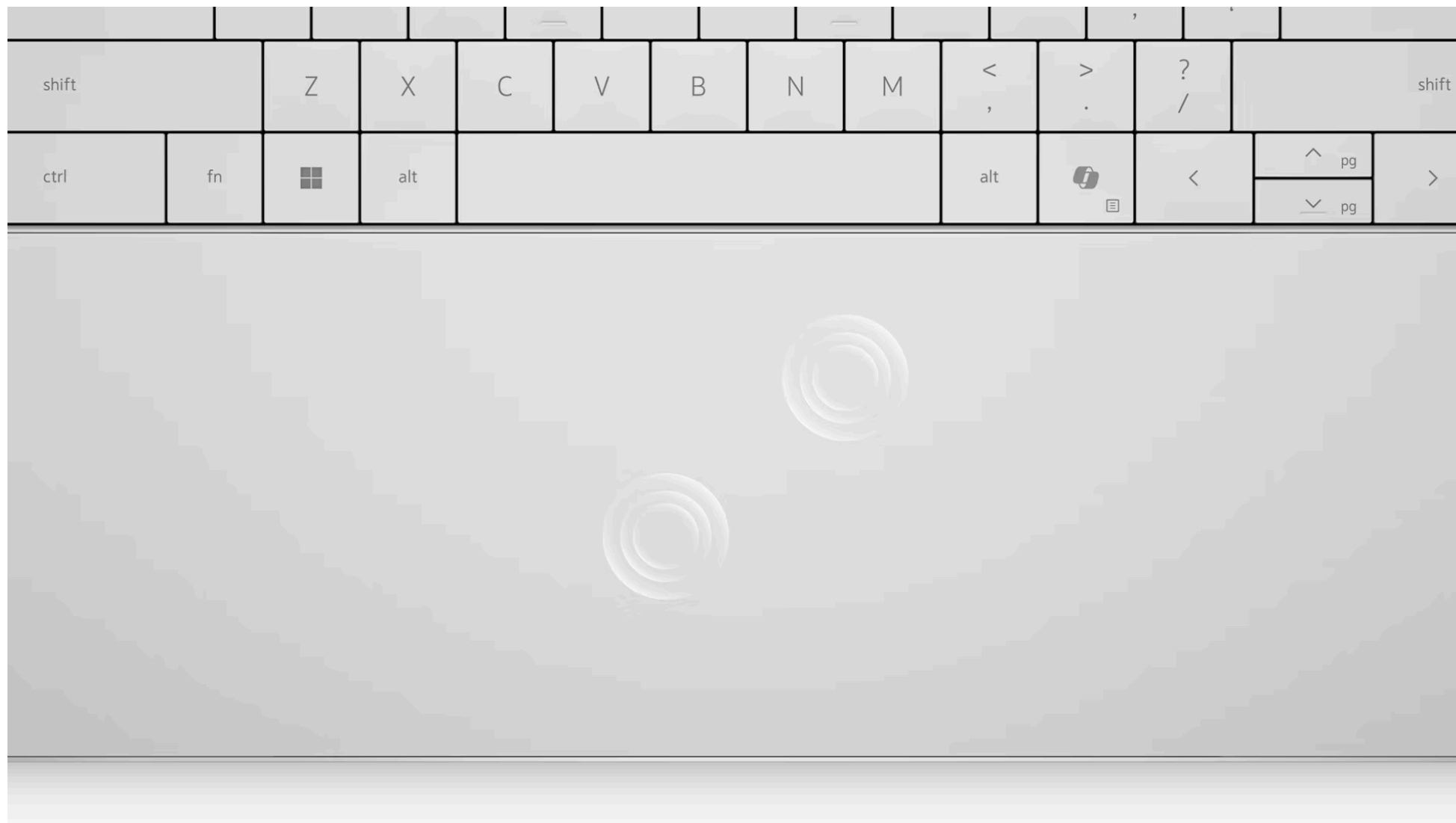
Surround yourself with rich 360-degree spatial sound for music, movies, games and more with Dolby Atmos and Waves MaxxAudio. The 10W quad-speaker design, tuned by multi-Grammy Award®-winning producer Jack Joseph Puig, delivers louder sound and deeper bass.<sup>[14]</sup>



## Innovative interiors

Switch tasks effortlessly with modern, easy-to-use interiors that deliver a clean, harmonious look.





### Seamless glass touchpad

A haptic touchpad provides precise responsive feedback. Sleek glass across the palm rest feels friendlier to the touch.

### Windows Copilot Key

With one click, you have instant access to Copilot for Windows - Your own personal AI assistant. Get real answers, inspiration and solutions at your fingertips.

### Comfortable keyboard

Larger, deeper, touch-friendly keycaps and less space between keys make typing more efficient.

## Crystal clear video<sup>✓</sup> chat

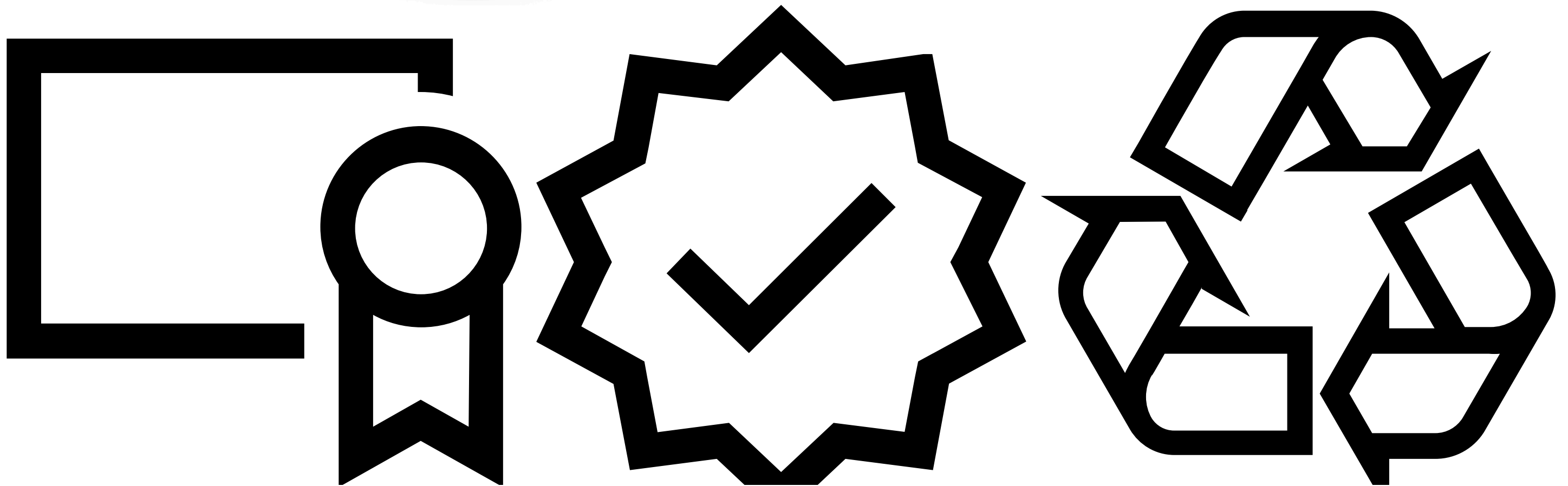
Look and sound your best on video calls with a high-resolution 1080p FHD 2MP webcam. Intelligent webcam and audio reduce background noise and show crisp detail even in low light.



AI-powered features keep you in focus, conceals or softens your background and adjusts your gaze to help you maintain eye contact.



Innovative and creative sustainability



# Stay productive with your PC

Anytime, anywhere personalised support. AI-powered issue detection and resolution, plus repair coverage you can trust.



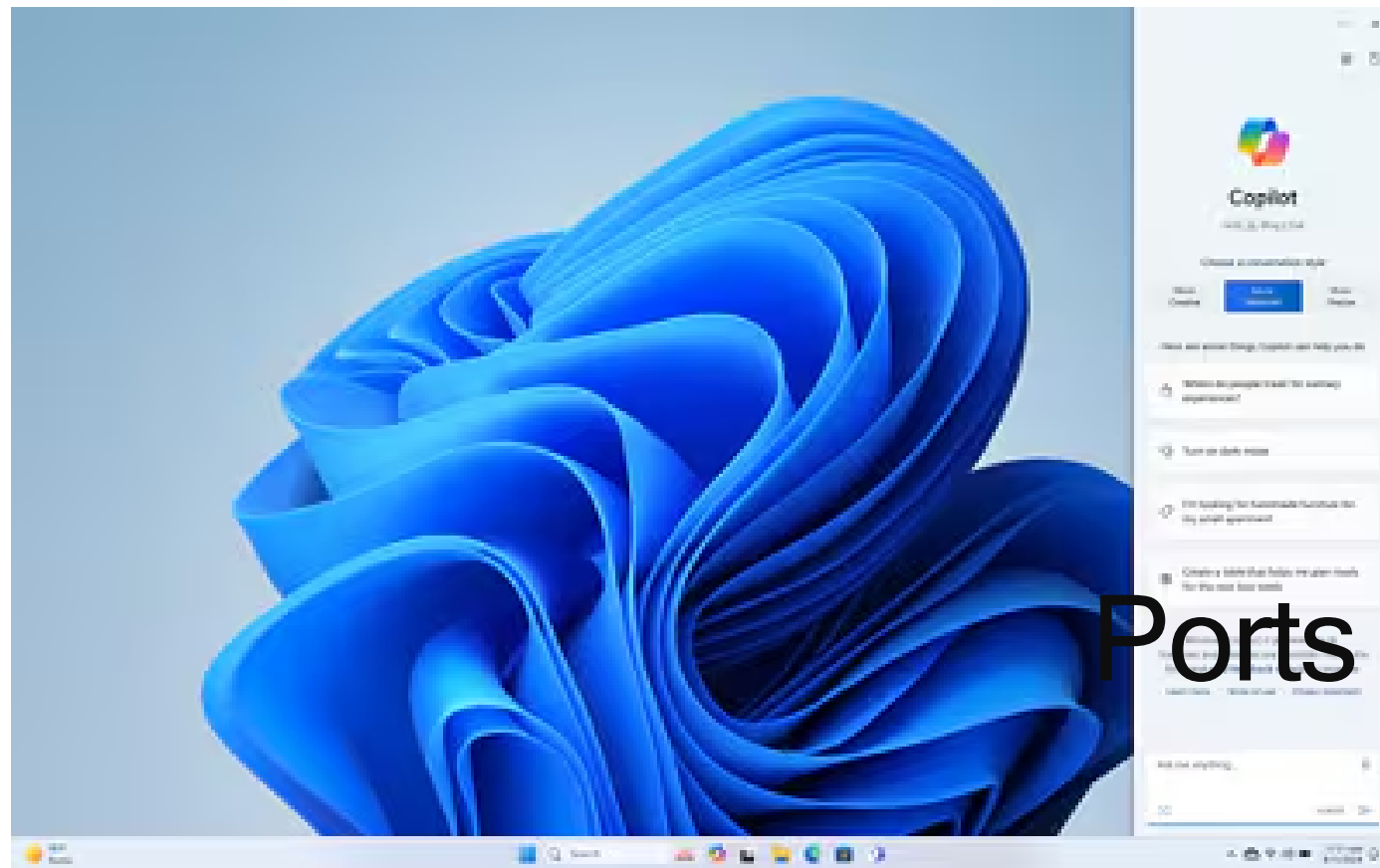
## Make everyday easier

Windows 11 comes with a modern design and multitasking tools to help you get it done faster, easier, and with style.

Your own personal AI assistant built right in to do the heavy-lifting so you can do the extraordinary. With Copilot in Windows get real answers, inspiration, and solutions for your questions, projects, and to-do-list<sup>[19]</sup>.

Stay connected and do more with Microsoft Teams and

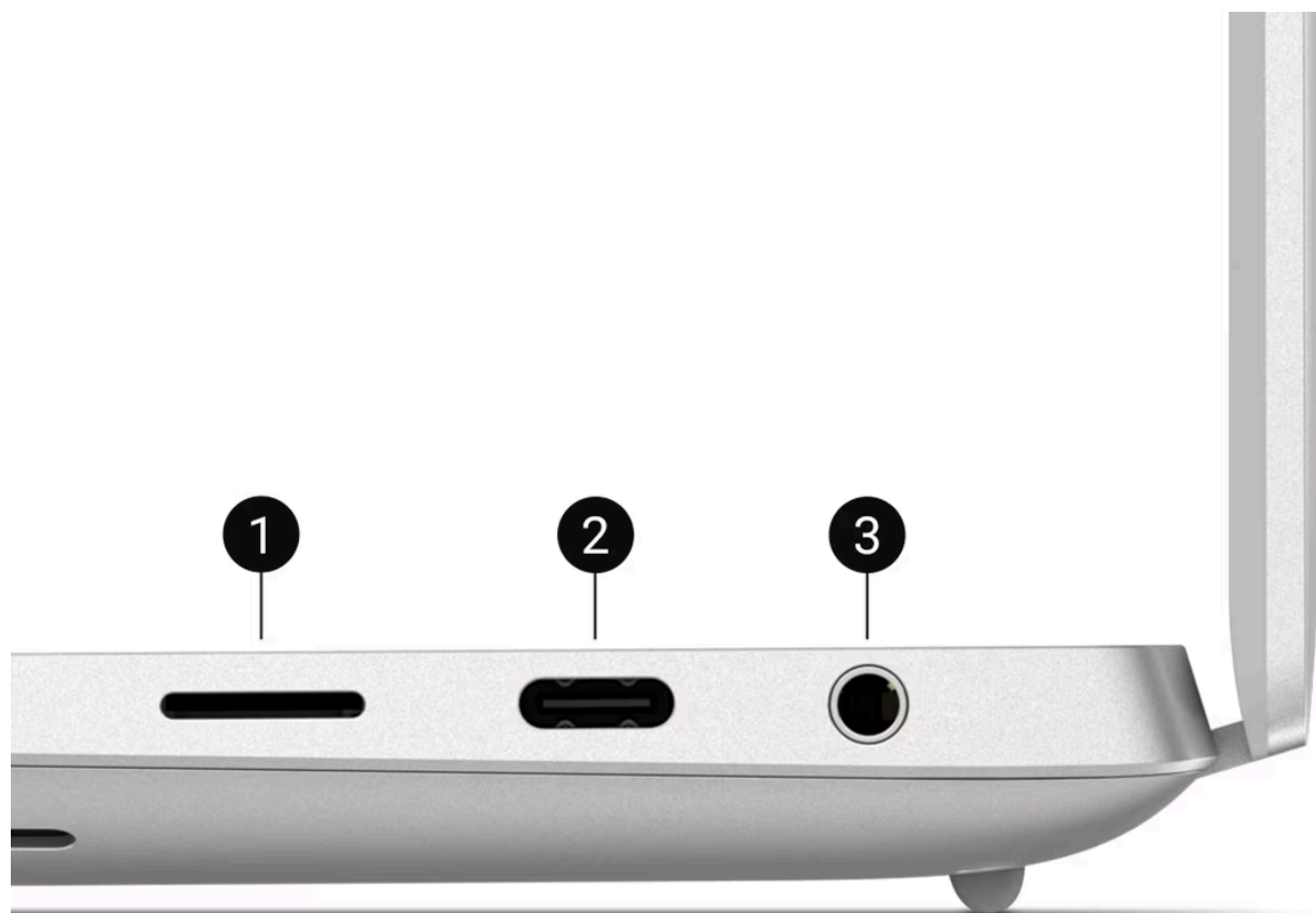




Windows Studio Effects. Now you can eliminate distracting sights and sounds and elevate your video calls experience<sup>[20]</sup>.

[Learn More](#)

# Ports and slots



Right view



Left view

Thunderbolt™ 4 (USB Type-C™) with Power Delivery  
and DisplayPort™

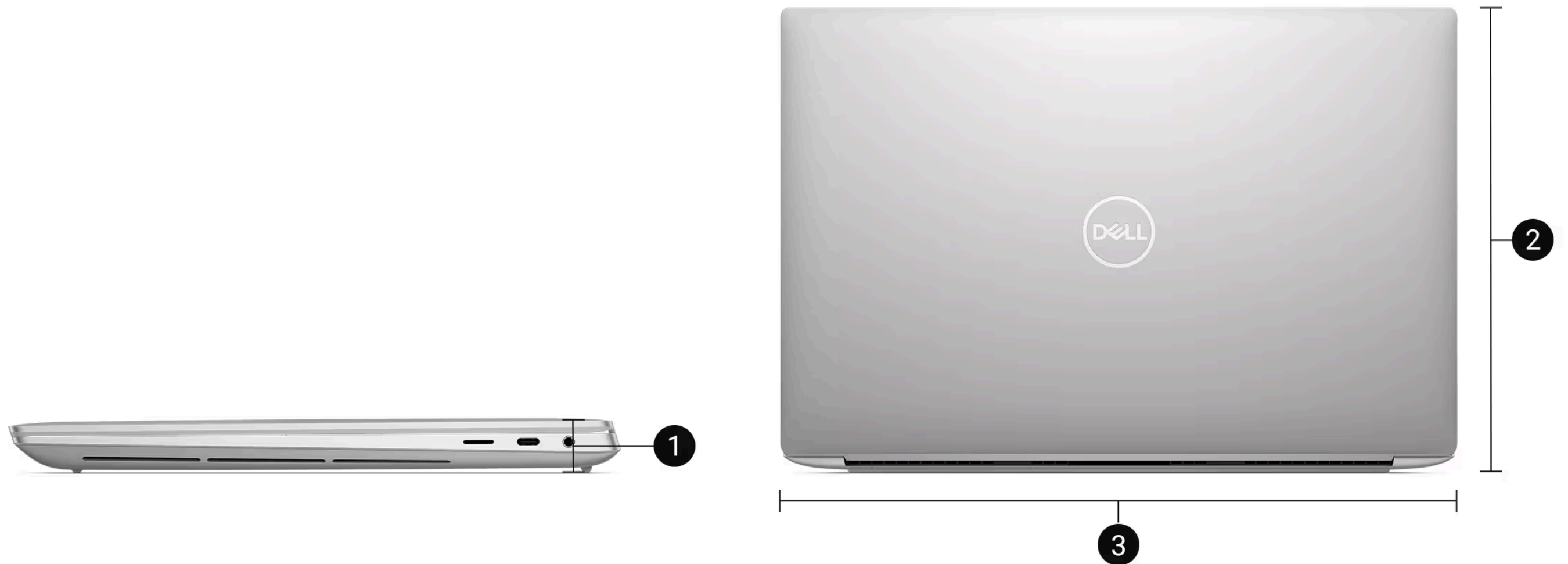
Thunderbolt™ 4 (USB Type-C™) with Power Delivery  
and DisplayPort™



MicroSDXC v6.0 UHS-I/UHS-II card reader

# Dimensions & Weight

Thunderbolt™ 4 (USB Type-C™) with Power Delivery



Height: 18.70 mm (0.74")

Depth: 240.05 mm (9.40")

Width: 358.18 mm (14.10")

Starting weight: 2.13 kg (4.70 lb) <sup>[21]</sup> for FHD+ and UMA; 2.20 kg (4.80 lb) <sup>[22]</sup> for OLED

# Regulatory Product Compliance & Environmental

Dell Technologies is committed to compliance with the laws and regulations in each country into which the company ships its products. Dell products are designed and tested to meet the appropriate worldwide standards for Product Safety, Electromagnetic Compatibility, Ergonomics, and other regulatory compulsory requirements when used for their intended purpose.

In addition, Dell products are developed with design for the environment in mind. Our environmental stewardship program drives conservation of product energy consumption, develops methods to reduce or eliminate materials for disposal, prolongs product life span, and provides effective and convenient equipment recovery solutions.